

SAW ✓  
A89-167

now Allegheny County

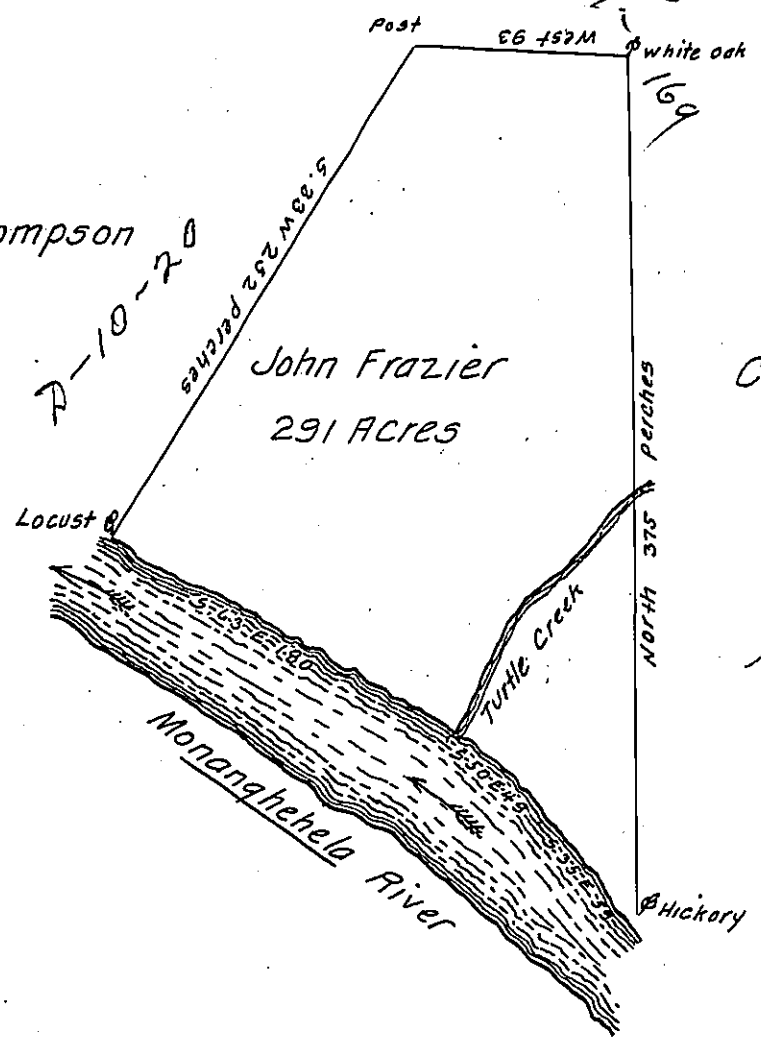
Robert Thompson

A-10-20  
252 Piches

John Frazier  
291 Acres

Conrad Winemiller

A 89-166



In pursuance of a Special Order dated the 24<sup>th</sup> March 1769 was Surveyed for John Frazier the 15<sup>th</sup> Aug<sup>r</sup> 1769 The above described Tract of Land situated at the Mouth of Turtle Creek on Mononghehela River in Westmoreland County containing two hundred and Ninety one Acres and the Allowance of Six Acres & Cent for Roads &c.

To John Lukens Esq<sup>r</sup> }  
Surveyor General } p<sup>r</sup> W<sup>m</sup> Thompson D<sup>y</sup> S<sup>c</sup>

IN TESTIMONY that the above is a copy of the original remaining on file in the Department of Internal Affairs of Pennsylvania, made conformably to an Act of Assembly approved the 16th day of February 1833, I have hereunto set my hand and caused the Seal of said Department to be affixed at Harrisburg, this twenty second day of April 1907.

*James P. [Signature]*  
Secretary of Internal Affairs.